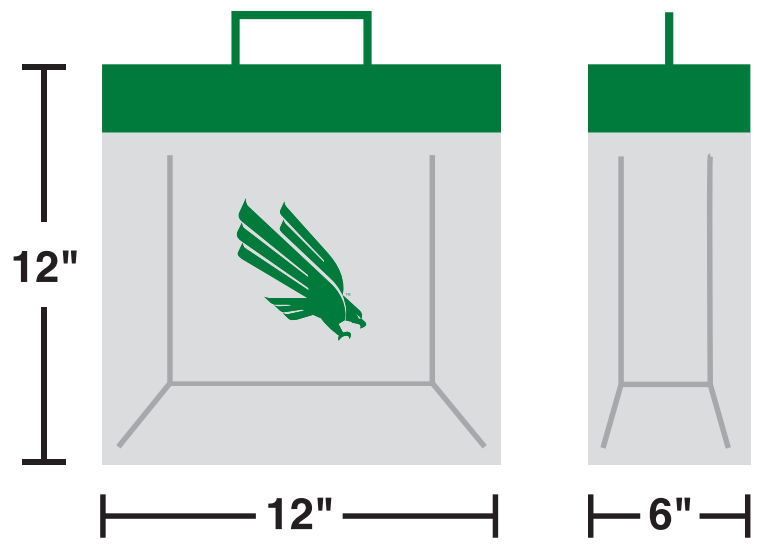




# COMMENCEMENT CLEAR BAG POLICY

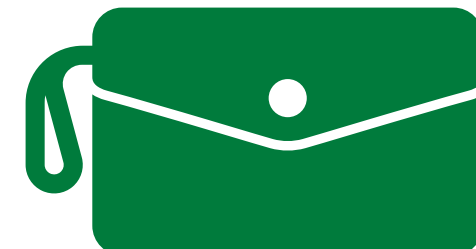
## ALLOWED ITEMS ✓



CLEAR BAG UP TO 12" X 6" X 12"  
ANYTHING LARGER IS PROHIBITED



MEDICAL ITEMS  
INCLUDING DIAPER BAGS



6.5" X 4.5"  
SMALL CLUTCH PURSE



CAMERAS, TABLETS  
& BINOCULARS

## METAL DETECTORS IN USE



## PROHIBITED ITEMS



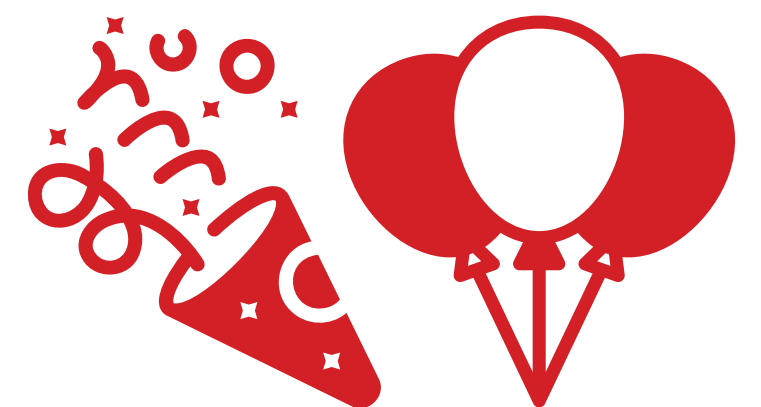
FLAGS, BANNERS



WEAPONS



FOOD, DRINK



CONFETTI, BALLOONS



NOISEMAKERS



GLASS, VASES

### LEAVE PROHIBITED ITEMS IN VEHICLE